

U. PORTO

 **FACULDADE DE DIREITO
UNIVERSIDADE DO PORTO**

School of Criminology

Common Session on Criminal Justice and Critical Criminology

Porto – Portugal

21st-23rd May 2012.

LOCATION: PORTO, FACULTY OF LAW, UNIVERSITY OF PORTO

RUA DOS BRAGAS, 223

**THEME: “EPISTEMOLOGY AND METHODOLOGY AS TOOLS FOR A
CRITICAL ANALYSIS”.**

HOW TO GET TO PORTO?

You can fly to Porto from most of the European main airports. For instance, Ryan Air operates in Porto so you'll probably be able to find low cost flights.

Porto's airport is called Airport Francisco Sá Carneiro (http://www.ana.pt/portal/page/portal/ANA/AEROPORTO_PORTO) and you can travel to and from it directly by bus, Metro or taxi. The easiest and cheapest way is to travel by Metro (http://www.metroporto.pt/en/PageGen.aspx?SYS_PAGE_ID) using the purple line E to travel to your hotel or to the Faculty.

For instance:

FROM: Porto Airport **TO:** Faculty of Law, University of Porto

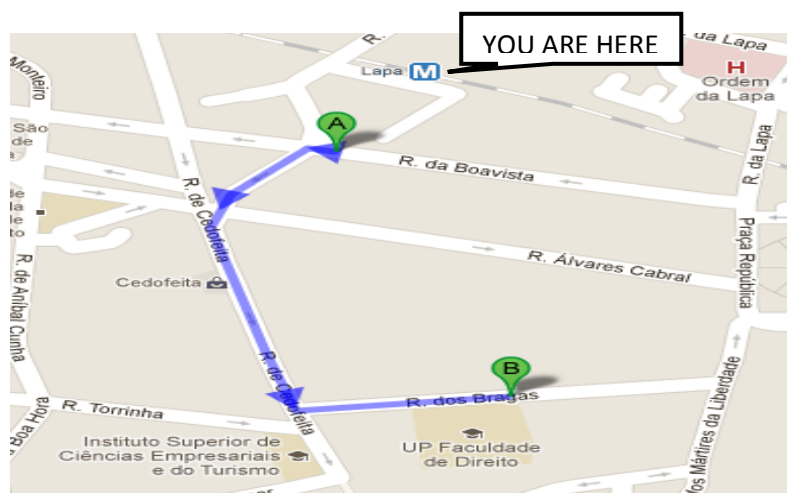
1. Get in **Metro** (timetables attached)

From: Airport Francisco Sá Carneiro **To:** Lapa (Heading: Estádio do Dragão)

Leave at station/stop: Lapa

Indicated tariffs: Z4 ANDANTE's ticket

2. **Walk to:** Rua dos Bragas, 223 – Faculty of Law, University of Porto



HOW TO GET TO PORTO?

You can also fly to Lisbon Airport and then get the train (Alfa Pendular ou Intercidades: <http://www.cp.pt/cp/displayPage.do?vnextoid=a4f6f9e12a584010VgnVCM1000007b01a8c0RCRD&lang=en>) to Porto.

For instance:

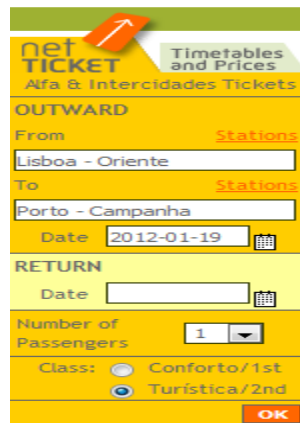
FROM: Lisbon Airport **TO:** Faculty of Law, University of Porto

1. In Lisbon airport you should get in the **Taxi** to **Gare do Oriente (train station)**
2. In Gare do Oriente get in **Intercidades or Alfa Pendular** (you are not allowed to enter the train without a ticket so please buy it before travelling)

From: Lisboa - Oriente

To: Porto - Campanhã

You can check timetables and buy your **ticket online** in: <http://www.cp.pt/cp/displayPage.do?vnextoid=87cbd5abe2a74010VgnVCM1000007b01a8c0RCRD>

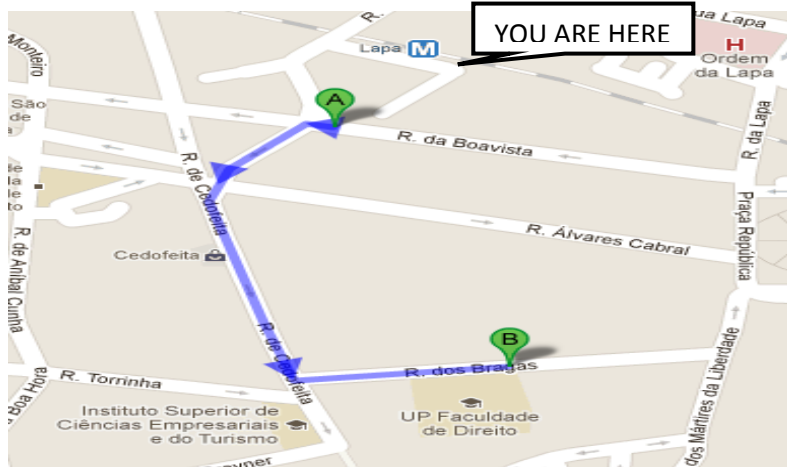


3. Get in **Metro** (timetables attached)
From: Campanhã **To:** Lapa (Lines A, B, C or D)

Leave at station/stop: Lapa

Indicated tariffs: Z2 ANDANTE's ticket

4. **Walk to:** Rua dos Bragas, 223 – Faculty of Law, University of Porto



LOCAL ACCOMMODATIONS

We can suggest you some accommodation very close to the Faculty and (fortunately) also very close to city center and leisure sites. You can choose from the list bellow according to how much you want to spend, if you're in a group, etc. We also have some good deals if you mention you're here for the CS!

A) Oporto Fado Hostel (<http://www.oportofadohostel.com/>)

Rua de Álvares Cabral 213 4050-040 Porto

Phone: +351 910635555

- ➔ Near Lapa metro station
- ➔ About 5 minutes walking to the Faculty

Special prices for Common Session!!! BOOK UNTIL 31th March. Send email to residencialmarfim@gmail.com

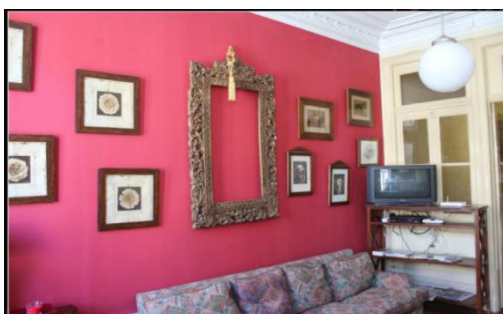
Dorms 8 people ➔ 10€/person

Private room 4 people ➔ 10€/person

Private room 5 people ➔ 10€/person

Private room 6 people ➔ 10€/person

All of the dorms with shared WC



B) Family & Fun

Praça da Republica 101, 4050 032, Porto, Portugal

Phone: +351 910635555

→ Near Lapa metro station

→ About 3 minutes walking to the Faculty

Special prices for Common Session!!! Book until 31th March. Send email to residencialmarfim@gmail.com

Private room 6 people with private WC → 11€/person

Private room 8 people with private WC → 10€/person



C) Residencial Marfim Guest House (<http://www.residencialmarfim.com/>)

Rua de Álvares Cabral 221 4050-040 Porto

Phone: +351 910635555

- ➔ Near Lapa metro station
- ➔ About 5 minutes walking to the University

Special prices for Common Session!!! Book until 31th March. Send email to residencialmarfim@gmail.com

Dorms 6 people with private WC → 12€/person

Private room 6 people with private WC → 11€/person

Private room 4 people with private WC → 12€/person

Private double room with private WC → 15€/person



D) Hotel Estoril Porto (<http://pensaoestoril.com/>)

R. de Cedofeita 193 4050 Porto, Portugal

Phone: +351 222 002 751 or +351 222 005 152

- ➔ Near Lapa Metro Station
- ➔ About 5 minutes walking to the University

Single ➔ 31,90€

Double room ➔ 33,90€/room

Private room 3 people ➔ 51,90 €/room

Private room 4 people ➔ 60€

Reservations should be done at booking.com



E) Best Western Hotel Inca (<http://www.bestwesternhotelinca.com/>)

Praça Coronel Pacheco, 52. 4050-453 Porto Portugal

Phone: +351 222 084 151

- ➔ 3 minutes walking to the University
- ➔ Single → 60€
- ➔ Double room → 60€/room (two single beds or one double bed)



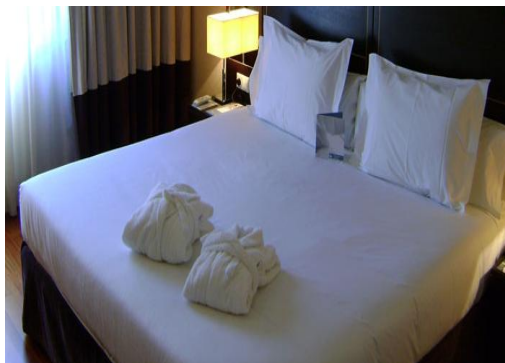
F) Hotel Eurostars Das Artes (<http://www.eurostarsdasartes.com/PT/hotel.html>)

Rua do Rosário, 160-164 Porto

Phone: +351 222071250

Single → 60,80€

Double room → 131,10€/room



See the streets' location on the map below



- A Rua dos Bragas, Porto, Portugal
- B Praça do Coronel Pacheco, Porto, Portugal
- C Rua do Rosário, Porto, Portugal
- D Praça da República, Porto, Portugal
- E Rua Álvares Cabral, Porto, Portugal
- F Rua de Cedofeita, Porto, Portugal

GOING OUT

Now that you've settled in Porto let us give you some tips on what to do while you're there.

Porto is well known by its history, food and wine but also by its nightlife. If you want to know more try this guide: <http://www.gooporto.com/>.

Also, this is a special year since Guimarães and Braga, two of the oldest cities in Portugal and just 60 km away from Porto, are celebrating the **European Capital of Culture** (<http://www.guimaraes2012.pt/index.php?lang=2>) and the **European Capital of Youth** (http://www.bragacej2012.com/?lang=en_GB).

You'll have plenty to enjoy but don't forget to attend the CS!!ⁱ

REGISTRATION:

THE CONFERENCE IS LIMITED TO MEMBERS OF THE MEMBER UNIVERSITIES AND INVITED GUESTS ONLY.

UNFORTUNATELY, REGISTRATION IS NOT POSSIBLE FOR MEMBERS OF THE PUBLIC OR NON-AFFILIATED UNIVERSITIES. IF YOU ARE NOT PART OF AN AFFILIATED UNIVERSITY BUT WISH TO ATTEND FUTURE CONFERENCES YOU MAY WISH TO CONSIDER ENROLLING IN A RELATED DEGREE PROGRAM OR PURSUING AN ERASMUS OR OVERSEAS EXCHANGE PROGRAM AT ONE OF THE PARTICIPATING UNIVERSITIES. REGISTRATION FOR STUDENTS OF THE RESPECTIVE UNIVERSITIES IS HANDLED LOCALLY BY THE STAFF REPRESENTATIVES, SO CONTACT YOUR OWN STAFF FOR SPECIFIC DETAILS AND REQUIREMENTS IN THE FIRST INSTANCE.

ⁱAny questions contact: rfaria@direito.up.pt or iguedes@direito.up.pt